

Gyproc® ProCote

Levelling Plaster for Interior Application

Gypsum-based undercoat plaster for interior leveling applications

Gyproc® ProCote is a specially formulated plaster suitable for 5 - 50 mm thick applications. It is an ideal alternative to replace traditional masonry (sand & cement) plastering as it is ready to use and easy to apply without additional aggregates. **Gyproc® ProCote** is a modern interior leveling solution that provides a crack-free finish with excellent adhesion and heat insulation properties.

Special Properties



Crack-Free Plaster



Excellent Adhesion to all kinds of backgrounds



Safe and User Friendly



Heat Insulating



Easy to Apply & Time Saving



Interior Use Only

Specification of Gyproc® ProCote

Apply **Gyproc® ProCote Undercoat Plaster** (produced in accordance with EN 13279-1) on all internal walls and ceilings (such as brick and concrete block walls, precast wall panels, concrete slabs, posts & beams, etc.) where a leveling basecoat plaster of between 5 mm to 50 mm is required. Then apply either Gyproc® GypCote TOTAL or Gyproc® ProCote TOP Skim Coat Plaster at a thickness of 1 - 2 mm to achieve smooth finish. Follow manufacturer's instructions for preparation and application.

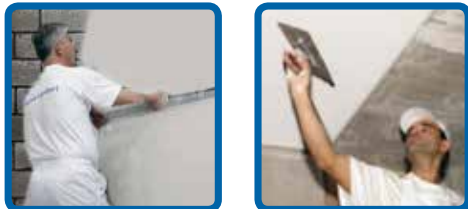
Gyproc® ProCote-120 Undercoat Plaster

Type of Plaster	Off-White Interior Undercoat Plaster
Weight / Bag	20 kgs
Thickness	5 - 50 mm
Working Time	120 minutes after mixing with water
Water Requirement / Bag	12 - 13 litres
Coverage / Bag	2.5-2.6 sq.m based on avg. thickness 10 mm
Drying Shrinkage	0.02 - 0.03% (ASTM C596-96)
Bonding Strength	0.95 - 1 MPa (EN 13279-1)
Compressive Strength	>2 MPa (EN 13279-1)
Water Retention	>96% (EN 13279-1)
pH	7 - 8 (Neutral)
Storage Method	Keep in a dry place and do not expose to direct sunlight
Product Shelf Life	8 months after production date
Product Standard	EN 13279-1

Gyproc® ProCote provides **2.5 times more coverage than Traditional Cement Plaster**



Gyproc® ProCote : Easy to Apply & Time Saving



Surface Preparation



- Background surface must be dry, free from dust and grease.
- Remove imperfections such as dry cement built up from the surface.
- If there are structural cracks, these must be repaired before plastering.

Mixing Method



Mix one bag of **Gyproc® ProCote** (20 kgs) with 12 - 13 litres of clean water.

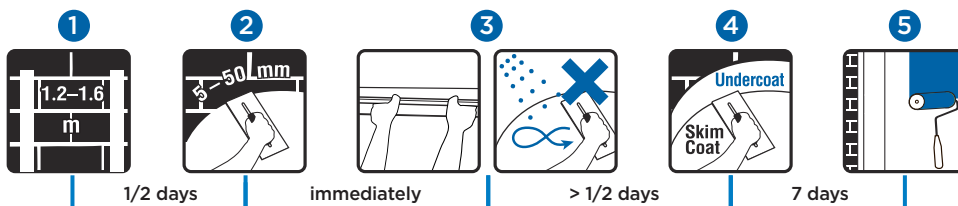


Pour **Gyproc® ProCote** into clean water in a bucket. Leave it to soak for 2 - 3 minutes.



Use a mixing drill at 700 RPM to mix the plaster. Use within 120 minutes after mixing.

Application



1. Use the plaster to make reference lines (screeds) with the required plaster thickness every 1.2 - 1.6 m. Then, leave it to dry.
2. Trowel-apply the plaster in 2 layers. The 1st coat is to quickly cover the whole surface and the 2nd coat is applied immediately with firm pressure to build out to the required thickness.
3. When stiff, flatten the plaster to the reference level (screed) by straight edge. No sponging process and water curing is required.
4. After the plaster sets, within 3-4 hours, use a patching trowel to softly scratch the surface. Then apply Gyproc® GypCote TOTAL (or) Gyproc® ProCote TOP Skim Coat Plaster in 1 - 2 layers to smoothen the surface to its final finish.
5. Leave the surface to dry for at least 7 days before painting or final decoration.

Comparison of Gyproc® ProCote and Traditional Cement Plaster

Wall Surface Quality



Gyproc® ProCote
3 Times Lower Drying Shrinkage

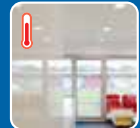


Cement Plaster
Likely to crack

Thermal Conductivity



Gyproc® ProCote
2.5 times lower Thermal Conductivity



Cement Plaster
Higher heat Transmission and absorption

Screwing Appearance

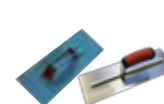


Gyproc® ProCote
Flexible and meets EN Std.



Cement Plaster
Likely to crack after screwing

Accessories



• Trowel



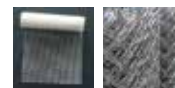
• Straight Edge



• Patching Trowel



• Hawk



• Fiberglass or Metal lath



• Mixing Drill



• Spraying Machine

SAINT-GOBAIN

Written enquiries should be addressed to:
Thai Gypsum Products Pcl.
Gypsum Metropolitan Tower
539/2 Si Ayutthaya Road,
Ratchathewi, Bangkok 10400
Thailand
Tel: +66 2 640-8600

Technical Support
Tel: +66 2 640-8787

Customer Service Centre
Tel: +66 2 640-8700
Fax: +66 2 640-8770
E-mail : export.tgp@saint-gobain.com
www.gyproc.co.th

VERSION : 01/2018



**HOTLINE
GYPROC**
(0)2640-8700



www.gyproc.co.th



Gyproc Thailand