

# Gyproc® ProCote TOP

## Skim Coat Plaster for Interior Application

**Gyproc® ProCote TOP** is a white, gypsum based fine finishing plaster suitable for skim coating applications of 1 - 5 mm thick onto interior walls and ceilings with non - crack solution. Formulated to re - finish surfaces of Gyproc® ProCote plaster, cement - rendered, concrete, precast, cement board surfaces. It also conceals hair - line cracks to produce a durable, perfectly smooth and flawless surface ready for final painting and decoration. Due to **Gyproc® ProCote TOP**'s excellent paint adhesion, a paint primer may not be required.



Skim Coat Plaster for Interior Application

### Special Properties



#### Smooth & Crack-Free Finish

- Light - weight and easy to apply
- Meaty consistency requires less applications for smoothing uneven surfaces
- More coverage than cement-based skim coats



#### Excellent Workability and Coverage

- Conceals hair-line cracks on wall surfaces
- 3 times less drying shrinkage than cement - based skim coats
- Save on rework and back job costs



#### Superior Paint Adhesion

- Low dust on surface after sanding / cleaning
- Neutral pH 7 - 8. No neutralizer required
- Save on painting materials and labor costs
- \* **May not require a paint primer**



#### For Interior Applications Only

- Ideal solution for surface preparation of interior walls and ceilings prior to painting / decoration
- Not suitable for outdoor use

### Specification of Gyproc® ProCote TOP

For smoothing of internal walls and ceilings, apply **Gyproc® ProCote TOP Skim Coat Plaster** (produced in accordance to EN 13279) at a thickness of 1 - 5 mm on plaster, cement-rendered, concrete, precast, cement board surfaces. Follow manufacturer's instructions for preparation and application.

#### Gyproc® ProCote TOP Skim Coat Plaster

Type of Plaster	White Interior Skim Coat
Bag Size	20 kg / bag
Thickness	1 - 5 mm
Working Time	90 minutes after mixing with water
Water Requirement	10 - 11 litres per bag
Coverage / Bag	20 sq.m based on thickness 1 mm
Storage Method	Keep in a dry place and do not expose to direct sunlight
Product Standard	EN 13279 type B2



## Application

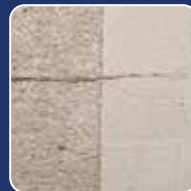


## Where to use?

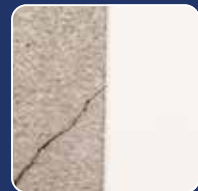
**Gyproc® ProCote TOP** provides a high quality skim coat finish for a wide range of internal surfaces such as plaster, cement-rendered, concrete, precast, cement board surfaces. It is recommended to be used in all types of construction from high-rise offices and condominiums to hospitals, schools and residential housing projects.

**Gyproc® ProCote TOP** provides a superior level of surface uniformity and visual finish to walls and ceilings making them ready for final decoration with paints or as a base for wall paper and other decorative finishes. In areas exposed to artificial or critical light, the finish is flawless when properly applied.

### Drying Shrinkage Comparison



**Cement-Based Plaster**  
Higher Drying Shrinkage 0.1%



**Gyproc® ProCote TOP**  
Lower Drying Shrinkage 0.03%

## Mixing Method



Use one bag of  
**Gyproc® ProCote TOP**  
20 kgs with 10 - 11 litres  
of clean water.



Pour **Gyproc® ProCote TOP**  
into the clean water and leave  
to soak for 2 - 3 minutes.



Mix thoroughly until it  
becomes a homogeneous  
paste. Use within 90 minutes.

## Application Procedure



### Surface Preparation

- Clean the surface until it is free from oil, dust, and dirt.
- Repair structural cracks prior work.

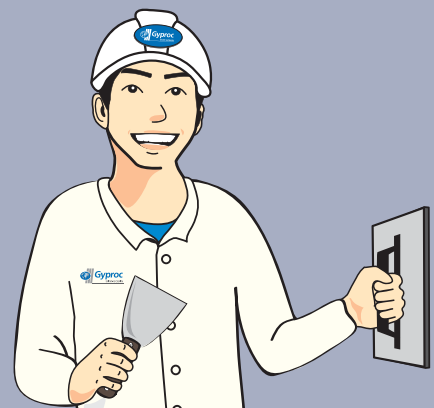


### Application

- Apply **Gyproc® ProCote TOP** with a metal trowel and build up to the required thickness (approx. 1 - 5 mm). must be left to dry for 45 - 240 minutes before the next coat is applied.
- For a high quality finish, press the metal trowel to adjust the surface plane and polish the surface until evenly smooth. Or Sanded after it has completely dried about 1 - 3 days to achieve a smooth finish. Dust should be removed before painting.
- **May not require a paint primer except for high gloss paints.**
- **It is recommended to test paint adhesion before eliminating a primer undercoat.**
- **If in doubt, follow paint manufacturer's instructions.**

## TIPS

- In order to achieve the highest coating efficiency, clean tools and equipments well before each application.
- Always use clean water for mixing the plaster.
- Store **Gyproc® ProCote TOP** in a dry area, away from humidity and sunlight.
- In case the plaster is to be applied on a painted wall, remove the original paint first, then apply solvent-based primer to increase adhesion before application of the plaster.
- In order to get a smooth coating and reduce trowel marks, use a large polishing trowel during application.



**SAINT-GOBAIN**

Written enquiries should be addressed to:  
**Thai Gypsum Products Pcl.**  
Gypsum Metropolitan Tower  
539/2 Si Ayutthaya Road,  
Ratchathewi, Bangkok 10400  
Thailand  
Tel: +66 2 640-8600

**Technical Support**  
Tel: +66 2 640-8787

**Customer Service Centre**  
Tel: +66 2 640-8700  
Fax: +66 2 640-8770  
E-mail : [export.tgp@saint-gobain.com](mailto:export.tgp@saint-gobain.com)  
[www.gyproc.co.th](http://www.gyproc.co.th)

VERSION : 01/2018



[www.gyproc.co.th](http://www.gyproc.co.th)



Gyproc Thailand