

# Gyproc® GypCote TOTAL

Thin Skim Coat Plaster for Interior Applications

**Gyproc® GypCote TOTAL** is a white, gypsum-based ultrafine finishing plaster suitable for skim coating applications of 0.5 - 3 mm thick onto interior walls and ceilings. It has an extra light-weight, but meaty consistency that ensures good workability and improves coverage on cement-rendered, concrete or drywall surfaces. It also conceals hair-line cracks to produce a durable, perfectly smooth and flawless surface ready for final painting and decoration. Due to **Gyproc® GypCote TOTAL's** excellent paint adhesion, a paint primer may not be required.



Thin Skim Coat Plaster for Interior Applications

## Special Properties



### Superior Paint Adhesion

- Low dust on surface after sanding / cleaning
- Neutral pH 7 - 8. No neutralizer required
- Save on painting materials and labor costs
- \* **May not require a paint primer**



### Smooth & Crack-Free Finish

- Light-weight and easy to apply
- Meaty consistency requires less applications for smoothing uneven surfaces
- 10% more coverage than cement-based skim coats



### Excellent Workability and Coverage

- Conceals hair-line cracks on wall surfaces
- 3 times less drying shrinkage than cement-based skim coats
- Save on rework and back job costs



### For Interior Applications Only

- Ideal solution for surface preparation of interior walls and ceilings prior to painting / decoration
- Not suitable for outdoor use

## Specification of Gyproc® GypCote TOTAL

For smoothing of internal walls and ceilings, apply **Gyproc® GypCote TOTAL** Skim Coat Plaster (produced in accordance to EN 13279-1) at a thickness of 0.5 - 3 mm on cement-rendered, concrete, gypsum board and cement board surfaces. Follow manufacturer's instructions for preparation and application.

### Gyproc® GypCote TOTAL Skim Coat Plaster

Type of Skim Coat	Ultra Fine & White Interior Skim Coat
Bag Size	20 kg / bag
Thickness	0.5 - 3 mm
Working Time	120 minutes after mixing with water
Water Requirement	9 litres per bag
Coverage / Bag	20 sq.m based on thickness 1 mm
Storage Method	Keep in a dry place and do not expose to direct sunlight
Product Standard	EN 13279-1 type B2



## Application

1



Cement-Rendered Wall

2



Concrete Wall

3



Concrete Ceiling

4



Gypsum Board

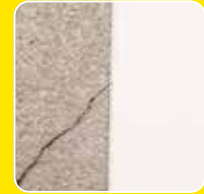
### Where to use?

**Gyproc® GypCote TOTAL** provides a high quality skim coat finish for a wide range of internal surfaces such as cement-rendered and concrete walls, hollow block walls, pre-cast concrete panels and drywall. It is recommended to be used in all types of construction from high-rise offices and condominiums to hospitals, schools and residential housing projects. Gyproc® GypCote TOTAL provides a superior level of surface uniformity and visual finish to walls and ceilings making them ready for final decoration with paints or as a base for wall paper and other decorative finishes. In areas exposed to artificial or critical light, the finish is flawless when properly applied.

### Drying Shrinkage Comparison



Cement-Based Plaster  
Higher Drying Shrinkage 0.1%



Gyproc® GypCote TOTAL  
Lower Drying Shrinkage 0.03%

## Mixing Method



Use one bag of **Gyproc® GypCote TOTAL** 20 kgs with 8 - 9 litres of clean water.



Pour **Gyproc® GypCote TOTAL** into the clean water and leave to soak for 2 - 3 minutes.



Mix thoroughly until it becomes a homogeneous paste. Use within 120 minutes.

## Application Procedure



### Surface Preparation

- Clean the surface until it is free from oil, dust, and dirt.
- Repair structural cracks prior to skim work.

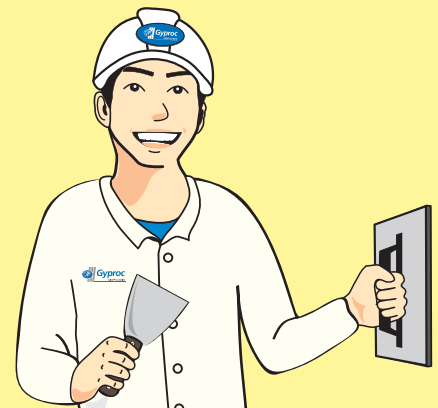


### Application

- Apply **Gyproc® GypCote TOTAL** with a metal trowel and build up to the required thickness (approx. 0.5 - 3 mm) by applying 2 or more coats.
- Each coat must be left to dry for 30 - 80 minutes before the next coat is applied.
- For a high quality finish, press the metal trowel to adjust the surface plane and polish the surface until evenly smooth.
- Alternatively, the surface of **Gyproc® GypCote TOTAL** can be sanded after it has completely dried, about 1 - 3 days, to achieve a smooth finish.
- Dust should be removed before painting.
- May not require a paint primer except for high gloss paints.
- It is recommended to test paint adhesion before eliminating a primer undercoat.
- If in doubt, follow paint manufacturer's instructions.

## TIPS

- In order to achieve the highest coating efficiency, clean tools and equipments well before each application.
- Always use clean water for mixing the plaster.
- Store **Gyproc® GypCote TOTAL** in a dry area, away from humidity and sunlight.
- In case the plaster is to be applied on a painted wall, remove the original paint first, then apply solvent-based primer to increase adhesion before application of the plaster.
- In order to get a smooth coating and reduce trowel marks, use a large polishing trowel during application.



**SAINT-GOBAIN**

Written enquiries should be addressed to:  
**Thai Gypsum Products Pcl.**  
Gypsum Metropolitan Tower  
539/2 Si Ayutthaya Road,  
Ratchathewi, Bangkok 10400  
Thailand  
Tel: +66 2 640-8600

**Technical Support**  
Tel: +66 2 640-8787

**Customer Service Centre**  
Tel: +66 2 640-8700  
Fax: +66 2 640-8770  
E-mail : [export.tgp@saint-gobain.com](mailto:export.tgp@saint-gobain.com)  
[www.gyproc.co.th](http://www.gyproc.co.th)

VERSION : 01/2018



[www.gyproc.co.th](http://www.gyproc.co.th)



Gyproc Thailand